

WB produces >>>

1. TANK FITTING PRODUCTS



2. ALUMINUM DOME COVERS



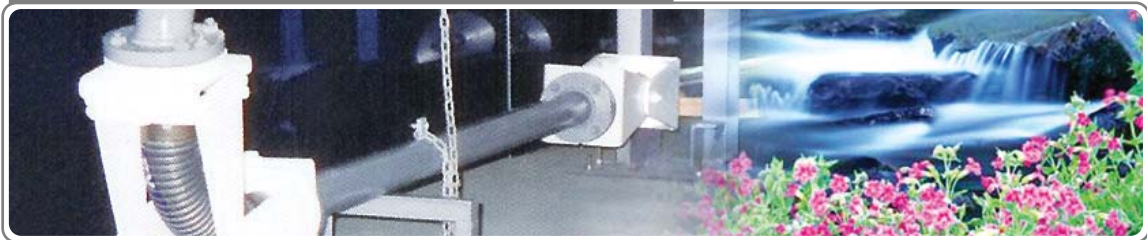
3. INTERNAL FLOATING ROOF SYSTEMS



4. EXTERNAL FLOATING ROOF SEAL SYSTEMS



5. 3+1" FLOATING ROOF DRAIN SYSTEMS



WB, World Best Products, World Best Service, World Best Technology

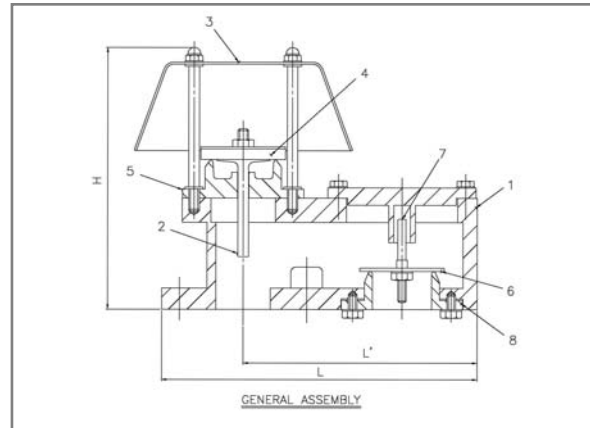
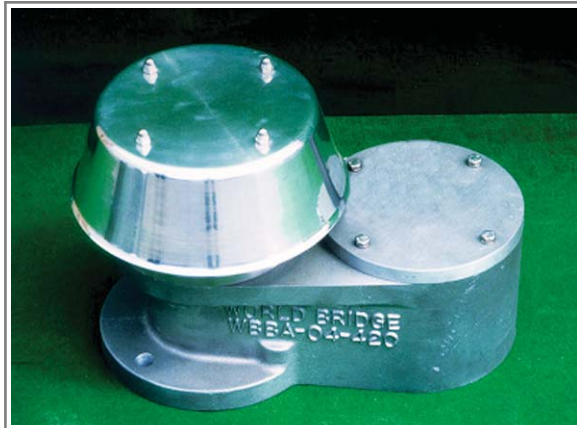
INDEX >>>

1. Pressure & Vacuum Relief Valves Products	03
2. Flame Arrestor Products	05
3. Gauge Hatch Products	07
4. Emergency Vent & Hatch Cover	09
5. NEW Vapor Reduction Device for Gauge Pole.	11
(Model No: WBVRD-8")	



• Pressure & Vacuum Relief Valves

1-1. WBBA – END LINE TYPE



• MATERIALS OF CONSTRUCTION

NO	1	2	3	4	5	6	7	8
COMPONENT	BODY	STEM GUIDE	HOOD	PRESSURE DISK	PRESSURE SEAT	VACUUM DISK	VACUUM COVER	VACUUM SEAT
MATERIAL	ALUMINIUM STEEL CASTING	ALUMINIUM STEEL CASTING	ALUMINIUM SUS316	SUS316 SUS316L	SUS316 SUS316L	SUS316 SUS316L	ALUMINIUM STEEL CASTING	SUS316 SUS316L

NOTE) STANDARD CONNECTION: ANSI 150lb FF FANGE.

JIS OR DIFFERENT SIZES ARE AVAILABLE UPON REQUEST.

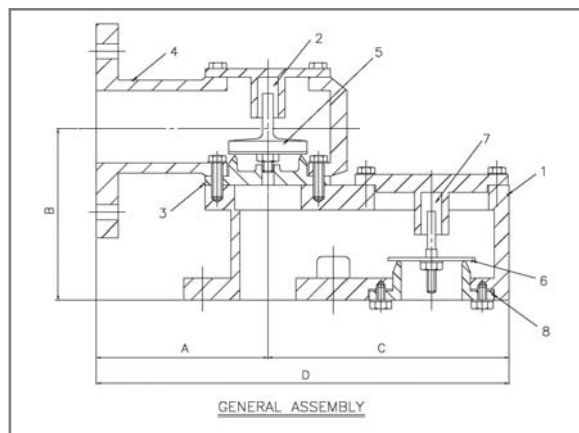
• DIMENSION TABLE

UNIT: MM

SIZE	50A	65A	80A	100A	150A	200A	250A	300A
L	320	380	415	465	605	740	940	1150
L'	215	260	280	320	390	485	610	740
H	280	315	350	385	520	585	740	865

• Pressure & Vacuum Relief Valves

1-2. WBBB – IN LINE TYPE



• MATERIALS OF CONSTRUCTION

NO	1	2	3	4	5	6	7	8
COMPONENT	BODY	PRESSURE COVER	PRESSURE SEAT	OUTLET BODY	PRESSURE DISK	VACUUM DISK	VACUUM COVER	VACUUM SEAT
MATERIAL	ALUMINIUM STEEL CASTING	ALUMINIUM STEEL CASTING	SUS316 SUS316L	ALUMINIUM STEEL CASTING	SUS316 SUS316L	SUS316 SUS316L	ALUMINIUM STEEL CASTING	SUS316 SUS316L

NOTE) STANDARD CONNECTION : ANSI 150lb FF FANGE.

JIS OR DIFFERENT SIZES ARE AVAILABLE UPON REQUEST.

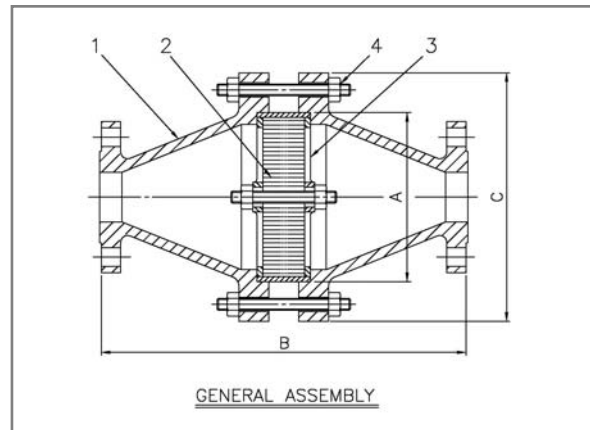
• DIMENSION TABLE

UNIT: MM

SIZE	50A	80A	100A	150A	200A	250A	300A
A	111	143	197	216	279	340	381
B	137	152	178	259	314	418	486
C	267	324	375	510	592	729	846
D	216	279	318	394	497	633	746
E	327	422	514	616	783	979	1133

• Flame Arrestor

2-1. WBFA – IN LINE TYPE



• MATERIALS OF CONSTRUCTION

NO	1	2	3	4
COMPONENT	BODY	CELL	HOUSING	STAY BOL T/NUT
MATERIAL	STEEL SUS304 ALUMINIUM CASTING	SUS304 SUS316 SUS316L	STEEL SUS316 SUS316L	CARBON STEEL SUS304

NOTE) STANDARD CONNECTION : ANSI 150lb FF FANGE.

JIS OR DIFFERENT SIZES ARE AVAILABLE UPON REQUEST.

• DIMENSION TABLE

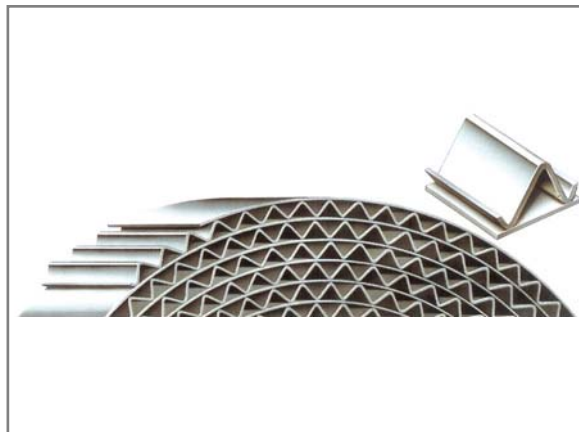
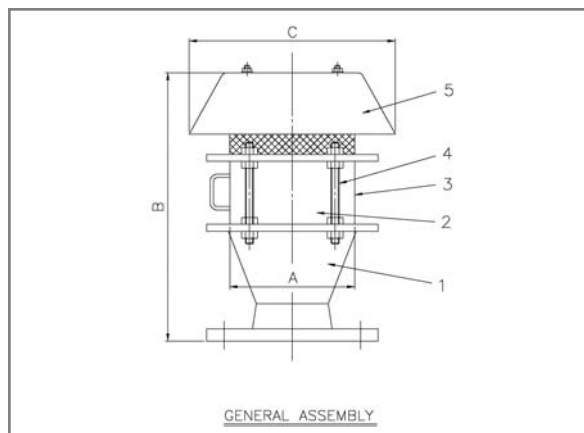
UNIT: MM

SIZE	50A	80A	100A	150A	200A	250A	300A
A	200	200	200	250	350	450	550
B	400	400	400	530	630	760	860
C	300	300	300	350	450	560	660

NOTE) 350~900 AND OVER – DIMENSION AVAILABLE UPON REQUEST

• Various Types of Aluminum Dome Covers

2-2. WBFA – END LINE TYPE



• MATERIALS OF CONSTRUCTION

NO	1	2	3	4	5
COMPONENT	BODY	CELL	HOUSING	STAY BOLT / NUT	HOOD
MATERIAL	STEEL SUS304 ALUMINIUM CASTING	SUS304 SUS316 SUS316L	STEEL SUS316 SUS316L	CARBON STEEL SUS304	STEEL SUS304 ALUMINIUM

NOTE) STANDARD CONNECTION : ANSI 150lb FF FANGE.

JIS OR DIFFERENT SIZES ARE AVAILABLE UPON REQUEST.

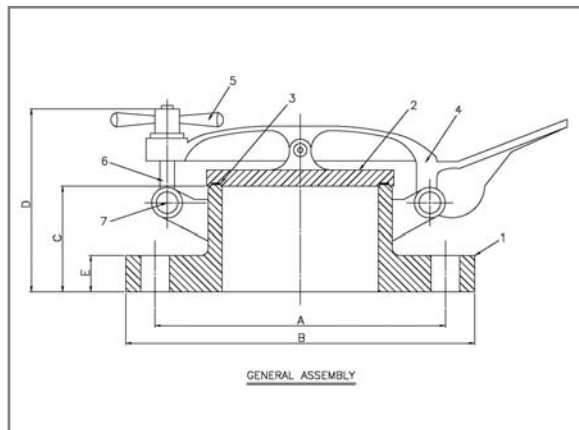
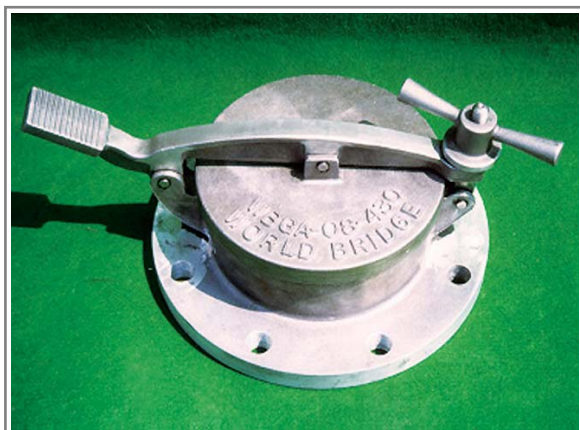
• DIMENSION TABLE

UNIT: MM

SIZE	50A	75A	100A	150A	200A	250A	300A
A	200	200	200	300	400	500	600
B	420	430	440	580	700	790	900
C	400	400	400	530	630	790	960

NOTE) 350~900 AND OVER – DIMENSION AVAILABLE UPON REQUEST

• Gauge Hatch Products



• INTRODUCTION

World Bridge's Gauge Hatch provides access for storage Tanks. When closed it assure a vapor tight seal that prevents leakage and evaporation loss It is designed for easy installation, inspection and maintenance providing trouble free operation



• ORDERING INFORMATION

Connection Size
Bolt Pattern
Gasket Material
Option

• DESIGN FEATURES

Vapor Tight Seal
Non-Sparking (All Aluminum)
Lockable Closure
ANSI or Various Bolt Pattern

• MATERIALS OF CONSTRUCTION

NO	1	2	3	4	5	6	7
COMPONENT	BODY	LID	LID GASKET	ARM	HANDLE	SWING BOLT	ROLL PIN
MATERIAL	ALUMINIUM STELL CASTING	ALUMINIUM STELL CASTING	NEOPRENE VITON SPECIA	ALUMINIUM STELL	ALUMINIUM STELL CASTING	SUB316 SUB316L	SUB316 SUB316L

NOTE) STANDARD CONNECTION : ANSI 150lb FF FANGE.

JIS OR DIFFERENT SIZES ARE AVAILABLE UPON REQUEST.

• Gauge Hatch Products

• DIMENSION TABLE

UNIT: MM

SIZE	100A	150A	200A
A	229	279	343
B	134.9	241.5	298.5
C	80	100	125
D	171	205	251
E	20	25	29



WB Tank Fitting products are installed at local tank farms

• Emergency Vent & Hatch Cover

• INTRODUCTION

World Bridge's new Emergency Vent & Hatch Cover is designed to provide an emergency pressure relief opening for storage tanks when exposed to over-pressure that is not handled by normal tank vent. These vents provide the capacity for emergency venting due to fire exposure when properly sized. These Cover also provide quick easy access for tank inspection and maintenance.

World Bridge's Emergency Vent & Hatch Cover provides both of pressure relief & vacuum relief.

Vacuum relief is optional function of Emergency Vent & Hatch Cover.

When excessive pressure builds within the storage tank, the World Bridge Emergency Vent & Hatch Cover hinged cover begins to open at the predetermined setting relieving excess pressure. When the over-pressure has dissipated the over reseats onto the base. The hinge mechanism prevents misalignment and provides an accurate reseats.



WB 12" Emergency Vent & Hatch Cover

• DESIGN FEATURES

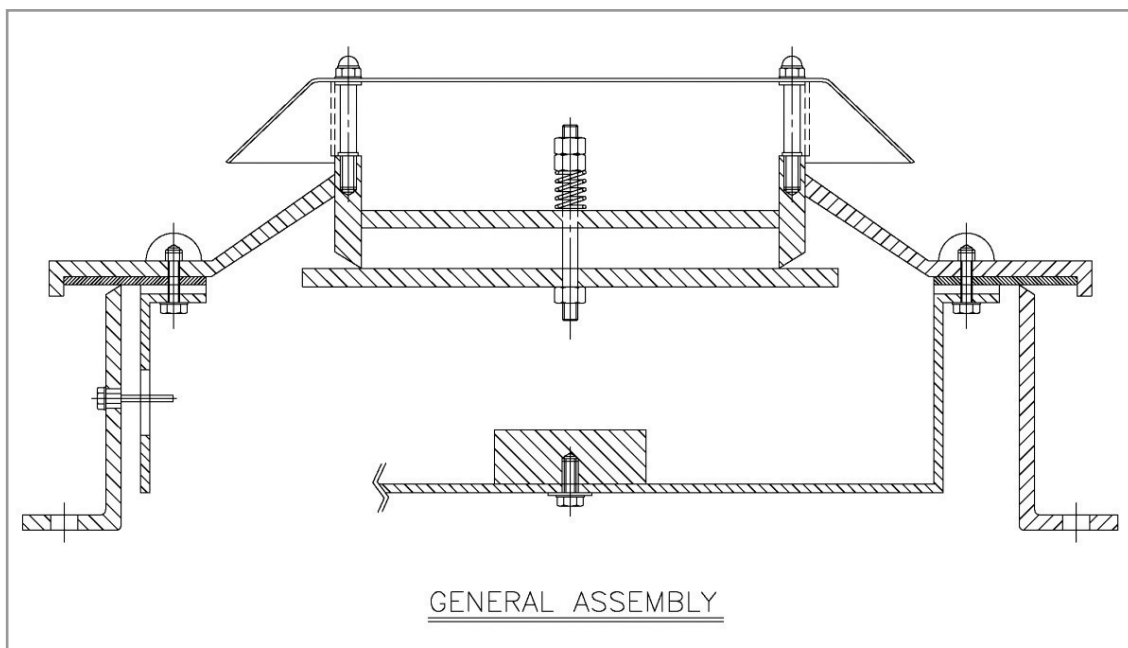
World Bridge's Emergency Vent & Hatch Cover is available in several materials that are corrosion resistant to most of petroleum product applications.

Standard materials consist of fabricated steel base with stainless steel coating and aluminum cover with Neoprene or Viton gasket. For more severe corrosive applications World Bridge offers a selection of optional materials.

• ORDERING INFORMATION

- Size of flange
- Bolt Pattern
- Base and Arm Material: Carbon Steel or options
- Disk Cover Material: Aluminum and Options
- Gasket Material: Neoprene or Viton
- Pressure Setting
- Unique Application Requirements

• Emergency Vent & Hatch Cover



• MATERIALS OF CONSTRUCTION

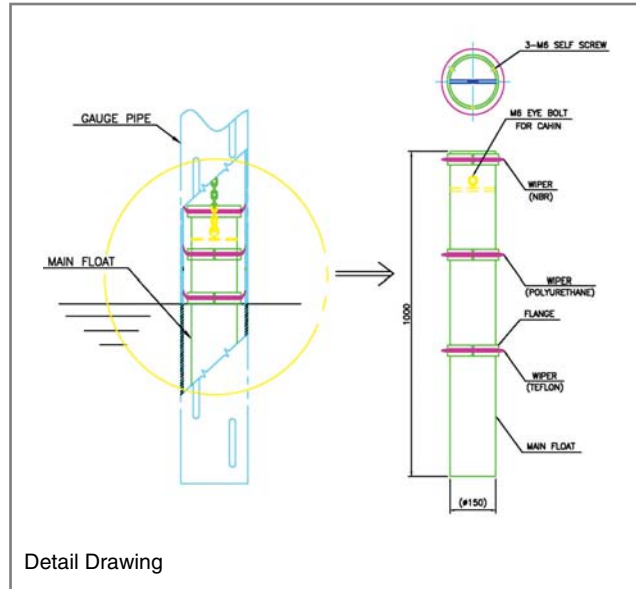
NO	1	2	3	4	5
COMPONENT	BODY	COVER	ARM	GASKET	BOLT PATTERN
MATERIAL	CARBON STEEL ALUMINUM SUS304 SUS316	CARBON STEEL ALUMINUM SUS304 SUS316	CARBON STEEL ALUMINUM SUS304 SUS316	NEOPRENE VITON	SUS304 SUS316

• DIMENSION TABLE

SIZE		200A	300A	400A	500A	600A
A		340	480	600	670	760
B	SHORT ARM	400	530	650	740	860
	LONG ARM	630	770	880	980	1,080
C		12	12	12	19	19
D		165	165	165	170	170

NOTE) VARIATION DUE TO DIFFERENCE IN ANSI AND API FLANGE DIMENSIONS.

• Vapor Reduction Device for Gauge Pole. Model No: WBVRD-8"



VAPOR REDUCTION DEVICE FOR GAUGE POLE, MODEL WBVRD-8

• SELECTION TABLE

1. DIMENSION : 6", 8" & 10"
2. MATERIAL : ALUMINIUM BODY OR OTHER ALLOY
3. SG RANGE : 0.6~1
4. SEALING MATERIAL : PTFE & SPECIAL POLYMER PRODUCT
(Other specific sealing materials are also available)

WB has developed above vapour reduction device in order to prevent residual VOC(Volatile Organic Compounds) escape from inside of gauge pipe.

Meantime, our clients are very happy to use these devices on the occasion of no more vapour escape from cone roof type tanks which equipped with aluminum internal floating cover systems.

WB VRD-8" can simply adjust the middle parts of special ring holder to control exact product level over product S.G range 0.6 to 1 grade.

For more details information, please kindly consult with our engineering department.



WORLD BRIDGE'S MODERN FACTORY AND OFFICE.
TOTAL LAND SPACE 7000 SQ METER INCLUDING
FACTORY & OFFICE BUILDING SPACE 3300 SQ M

Sales & Marketing

서울시 영등포구 문래동1가 39
Tel.02 784 5321 Fax.02 784 5322

915, Centerplus, 39 Munrae-Dong 1Ga,
Yeongdeungpo-Ku, Seoul, Korea
Tel.82 2 784 5321 Fax.82 2 784 5322

Factory

경기도 김포시 하성면 마조리 459-26
Tel.031 988 0700 Fax.031 988 0701

459-26, Majo-Ri, Hasung-Myun
Kimpo, Kyonggi-Do, Korea
Tel.82 31 988 0700 Fax.82 31 988 0701